

# Radiological and Clinical Presentation of Interstitial Lung Disease in Patients with Concomitant Psoriasis: A Cross-sectional Study

MANOJ MEENA<sup>1</sup>, AANCHAL SHARMA<sup>2</sup>, SHIV PRAKASH SHARMA<sup>3</sup>, VINAYAK MANGAL<sup>4</sup>, NANDITA PUROHIT<sup>5</sup>

## ABSTRACT

**Introduction:** Psoriasis is a chronic inflammatory, immune-mediated proliferative skin disorder that predominantly involves skin, nails, and joints. Pulmonary manifestations, Interstitial Lung Disease (ILD), are very uncommon in psoriasis.

**Aim:** To evaluate the radiological and clinical presentations of ILD in patients with concomitant psoriasis.

**Materials and Methods:** This was a cross-sectional study that included 3,012 patients with psoriasis treated in the psoriasis clinic at the Department of Dermatology in SMS Medical College, Jaipur, Rajasthan, India, from March 2021 to February 2022 and 144 patients were referred to the Department of Respiratory Medicine with complaints of respiratory symptoms for comprehensive radiological, immunological, and clinical evaluation. Detailed history regarding ongoing drug therapy and demographic profile were collected, and radiographic characteristics were evaluated. Categorical data was expressed as a percentage (%), on the other hand, the continuous data were presented as the means $\pm$ SD and median with 25<sup>th</sup> and 75<sup>th</sup> percentiles (interquartile range). Pearson's correlation test

was used to determine statistical differences between the study groups.

**Results:** Out of the total patients, ILD was detected in 10 patients. The median age was 51.5 years (range 25-65), males and females were equally affected. The median time for the development of respiratory symptoms from the diagnosis of psoriasis was 24.5 months (range 6-60). Psoriasis Area and Severity Index (PASI) scores and time of development of respiratory symptoms from diagnosis of psoriasis were strongly and inversely correlated ( $r=-0.906$ ) ( $p<0.001$ ) with each other. Seven out of 10 patients (70%) had an High Resolution Computed Tomography (HRCT) pattern consistent with Usual Interstitial Pneumonia (UIP), 2 (20%) had fibrotic Non-Specific Interstitial Pneumonia (NSIP), and 1 (10%) had Combined Pulmonary Fibrosis and Emphysema (CPFE). Out of the 10 ILD patients, five patients were on immunosuppressive therapy, while five were not exposed to any immunosuppressive therapy.

**Conclusion:** According to the findings in the present study, the immunological cascade in lung parenchyma in psoriasis patients having high PASI scores may lead to lung fibrosis.

**Keywords:** Immunosuppressive therapy, Lung fibrosis, Usual interstitial pneumonia

## INTRODUCTION

Psoriasis is a chronic inflammatory, immune-mediated proliferative skin disorder that predominantly involves skin, nails, and joints. Chronic plaque-type psoriasis is the most common presentation, of psoriasis accounting for 90% of all cases [1]. The prevalence of psoriasis in India varies from 0.44% to 2.8% [2]. It has been associated with numerous dermatological and non-dermatological diseases, like cardiovascular diseases [3], diabetes mellitus [4], dyslipidaemia [4], and others. Pulmonary manifestations are uncommon and can include COPD, pneumonia, ILD, and nodules [5].

Interstitial Lung Diseases (ILD) or Diffuse Parenchymal Lung Diseases (DPLD) is an umbrella term used for a heterogeneous group of non neoplastic lung disorders characterised by diffuse cellular infiltrates in interstitium and/or alveoli that may lead to progressive fibrosis. On the basis of aetiology and clinicoradiological features, DPLDs are classified into idiopathic interstitial pneumonias and other DPLDs with known or unknown causes. The association between Connective Tissue Disorders (CTD) and ILD is well established; but lung involvement in psoriasis is very rarely seen. The overexpression of interleukin 17 (IL-17), Tumour Necrosis factor alpha (TNF- $\alpha$ ), Tumour Growth Factor  $\beta$  (TGF- $\beta$ ) has been linked to the development of ILD in patients of psoriasis [6]. Psoriasis involves chronic inflammation of skin, and the excess pro-inflammatory cytokines can spill over from inflamed skin into systemic circulation, affecting organs like lung parenchyma, as almost all the blood flows into the pulmonary

circulation. The IL-23/IL-17 axis plays an important role in the pathogenesis of Interstitial Pneumonia (IP) in psoriasis [7]. ILD in psoriasis is mostly reported as drug-induced pneumonitis secondary to immunosuppressants or biological therapies [8]. A few cases have been reported of the simultaneous existence of psoriasis and IP [7]. So, it is worth exploring the association between ILD and psoriasis, since both these entities share some common pathways leading to lung fibrosis. With this background, the present study was conducted with an aim to evaluate the radiological and clinical presentations of ILD in concomitant psoriasis.

## MATERIALS AND METHODS

This was a cross-sectional study that included 3,012 patients with psoriasis treated in the psoriasis clinic at the Department of Dermatology in SMS Medical College, Jaipur, Rajasthan, India, from March 2021 to February 2022 after taking Ethical Committee clearance (IEC NO-139/MC/EC/2021). Out of the total patients, 144 patients were referred to the Department of Respiratory Medicine with complaints of respiratory symptoms for further evaluation.

**Inclusion criteria:** (a) Age >18 years; (b) Diagnosed with either psoriasis or psoriatic arthritis by dermatologists and having respiratory complaints.

**Exclusion criteria:** Patients with Chronic Obstructive Pulmonary Disease (COPD), bronchial asthma, pneumonia, pulmonary tuberculosis, or other cardiac causes leading to shortness of breath

were excluded after performing the reversibility test on spirometry and other clinical and radiological evaluation. Patients aged  $\leq 18$  years of age and immunology positive for other CTDs like lupus, rheumatoid arthritis, sarcoidosis, scleroderma, or having history of Coronavirus Disease 2019 (COVID-19) infection were also excluded from the study.

### Study Procedure

A comprehensive review of history was conducted to elicit possible exposure to substances causing ILD, the autoimmune profile, and Cartridge-Based Nucleic Acid Amplification Test (CBNAAT) to rule out tuberculosis. Additionally, chest radiology (chest X-ray and HRCT), Pulmonary Function Tests (PFT), Diffusion Capacity of Lungs for Carbon Monoxide (DLCO), 2D Echo etc., were performed.

The PASI score and type of psoriasis or psoriatic arthropathy were diagnosed by a dermatologist. This score was calculated by dermatologist by quantitative evaluation of clinical severity of psoriasis. In this scoring system, four sites were included: head (h), upper limb (u), trunk (t), and lower limbs (l), and were separately scored on three parameters: erythema (E), induration (I), and scaling (D). Each one of these parameters is graded on a severity scale of 0-4 (where 0 stands for nil; 1 is mild; 2 is moderate; 3 is severe; and 4 is considered very severe). The area-wise percentage involvement of the involved sites was calculated as follows: 1=less than 10% involvement; 2=10-29%; 3=30-49%; 4=50-69%; 5=70-89%; and 6=more than 90%. The severity grading of the three symptoms is multiplied by the numerical value of the areas involved and by the various percentages of the four body areas. These values are then added to obtain the PASI score. The final formula for PASI score is:  $PASI = 0.1 (Eh + Ih + Dh) Ah + 0.2 (Eu + Iu + Du) Au + 0.3 (Et + It + Dt) At + 0.4 (El + Il + Dl) Al$ . The maximum score of the PASI is 72 [9].

### Outcomes Assessed

**Primary outcome:** Proportion/prevalence of concomitant ILD in psoriasis patients.

**Secondary outcome:** Correlation between PASI score and severity of ILD, and radiographic characteristics were evaluated.

### STATISTICAL ANALYSIS

Data analysis was carried out using Statistical Package for Social Science (SPSS) v22. Categorical data was expressed as percentages (%); on the other hand, the continuous data were presented as the means  $\pm$  SD and as median with 25<sup>th</sup> and 75<sup>th</sup> percentiles (interquartile range). Pearson's correlation test was used to find out statistical differences between the study groups. The p-value less than 0.05 was considered significant.

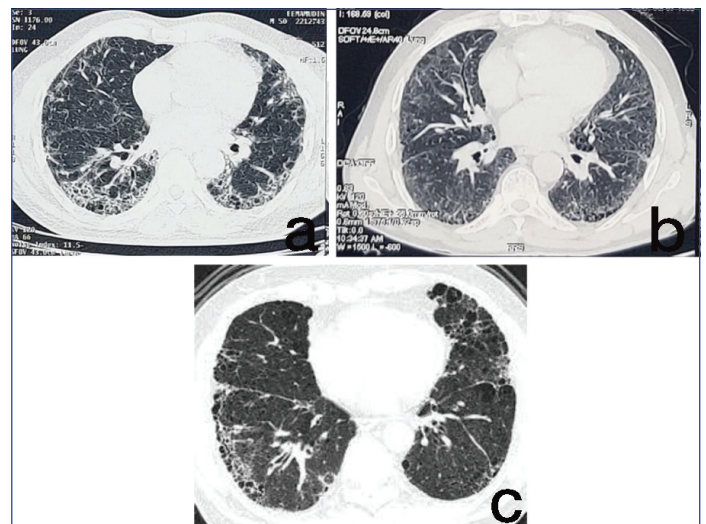
### RESULTS

Out of the 3,012 patients, 10 patients were diagnosed with ILD. The median patient age was 51.5 years (range: 25-65 years). The median time for the development of respiratory symptoms from diagnosis of psoriasis was 24.5 months (range: 6-60 months). The median Forced Vital Capacity (FVC) percentage predicted was 58% (range: 32-85), and DLCO% predicted was 42% (range: 23-79) [Table/Fig-1]. All patients had chronic plaque-type psoriasis [Table/Fig-2]. The most



**[Table/Fig-2]:** Showing chronic plaque-type psoriasis involving upper limbs and trunk.

common respiratory symptom at presentation was dry cough 6 (60%), followed by dyspnoea on exertion 4 (40%). Various serological testing and immunofluorescence assays to diagnose antibody patterns of various CTD were negative in all patients. A total of 5 (50%) patients had not previously or concomitantly been exposed to immunosuppressant, whereas 5 (50%) had been exposed. The most common immunosuppressants included methotrexate (n=4), followed by cyclosporine (n=1). Radiographic diagnosis were as follows: UIP pattern in 7 patients (70%, [Table/Fig-3a]), NSIP pattern in 2 patients (20%, [Table/Fig-3b]), and CPFE in 1 patient (10%, [Table/Fig-3c]). The [Table/Fig-4] demonstrates the demographic and clinical features of ILD patients with concomitant psoriasis.



**[Table/Fig-3]:** HRCT Chest of psoriasis patients showing: (a) UIP pattern; (b) NSIP pattern; (c) CPFE pattern.

In the present study, on comparing PASI scores among males, the mean value was  $26.52 \pm 9.4$ , while among females, the mean value was  $32.6 \pm 7.5$ . The mean time of development of respiratory symptoms from diagnosis of psoriasis scores among males was  $21 \pm 15.4$  months, and among females, it was  $17.8 \pm 12.13$  months. The mean duration of treatment before development of respiratory symptoms among males was  $8.8 \pm 6.2$  months and among females, it was  $7.4 \pm 9.3$  months [Table/Fig-5].

On applying correlation statistics, it was recorded that PASI scores and time of development of respiratory symptoms from diagnosis of psoriasis were strongly and inversely correlated ( $r = -0.906$ ) ( $p < 0.001$ ). Among other study parameters no significant correlations was found [Table/Fig-6].

Characteristics	Median, % or range
Age (years)	51.5 years (25-65 years)
Male	5 (50%)
Female	5 (50%)
Time for development of respiratory symptoms from diagnosis of psoriasis	24.5 months (6-60 months)
FVC% predicted	58% (32-85%)
DLCO% predicted	42% (23-79%)

**[Table/Fig-1]:** Patient characteristics.

Case	Age (years)	Sex	Type of psoriasis	PASI score	Treatment	Time of development of respiratory symptoms from diagnosis of psoriasis	Duration of treatment before development of respiratory symptoms	Radiological diagnosis of ILD (HRCT pattern)
1	51	M	CPP	38	Methotrexate	6 months	2 months	UIP
2	28	F	CPP	32.8	PUVAsoL	24 months	2 months	Fibrotic NSIP
3	62	F	CPP	20	Cyclosporine	36 months	5 months	Cellular NSIP
4	25	M	CPP	34.6	Methotrexate	9 months	6 months	UIP
5	35	M	CPP	24	Methotrexate	15 months	6 months	UIP
6	55	F	CPP	34.2	Methotrexate	11 months	3 months	UIP
7	58	F	CPP	36	PUVAsoL	12 months	3 months	CPFE
8	65	M	CPP	16	Acitretin	60 months	12 months	UIP
9	52	M	CPP	20	PUVAsoL	37 months	18 months	UIP
10	26	F	CPP	40	Acitretin	6 months	24 months	UIP

[Table/Fig-4]: Demographic and clinical features of ILD patients with psoriasis.  
CPP: Chroni plaque-type psoriasis

Variables	Gender	N	Mean	Std. Deviation	Std. Error mean
PASI score	F	5	32.600	7.5445	3.3740
	M	5	26.520	9.4420	4.2226
Time of development of respiratory symptoms from diagnosis of psoriasis (months)	F	5	17.80	12.133	5.426
	M	5	21.00	15.411	6.892
Duration of treatment before development of respiratory symptoms	F	5	7.40	9.343	4.179
	M	5	8.80	6.261	2.800

[Table/Fig-5]: Statistical data of the various groups of patients.  
M: Males; F: Females

Parameters		PASI score	Time of development of respiratory symptoms from diagnosis of psoriasis	Age	Duration of treatment before development of respiratory symptoms
PASI score	Pearson correlation	1	-0.906**	-0.508	-0.134
	Sig. (2-tailed)		0.001	0.134	0.713
Time of development of respiratory symptoms from diagnosis of psoriasis	Pearson correlation	-0.906**	1	0.511	0.165
	Sig. (2-tailed)	0.001		0.131	0.649
Age (years)	Pearson correlation	-0.508	0.511	1	-0.184
	Sig. (2-tailed)	0.134	0.131		0.611
Duration of treatment before development of respiratory symptoms	Pearson correlation	-0.134	0.165	-0.184	1
	Sig. (2-tailed)	0.713	0.649	0.611	

[Table/Fig-6]: Outcomes and statistical correlations of various groups.  
\*\*Correlation is significant at the 0.01 level (2-tailed)

DISCUSSION

Psoriasis is defined as a papulosquamous disorder characterised by disordered keratinisation arising due to T-cell mediated immune dysregulation.

In the present study, out of the 3,012 patients enrolled in the psoriasis clinic, 10 (0.33%) developed fibrotic lung disease, and 144 (4.78%) developed respiratory symptoms; however, the underlying cause of these symptoms as ILD was diagnosed in only 0.33% of the cases. The remaining patients had other respiratory ailments that led to cough and breathlessness. A similar study conducted by Ishikawa G et al., found that 4.7% of patients had concomitant psoriasis and fibrotic lung disease [10]. In contrast to our study, this was a retrospective study that enrolled patients from an ILD clinic, and their medical records were reviewed. Patients with a concomitant history of psoriasis were further evaluated based on their medical history. In a wide epidemiological study conducted by Peluso R et al., the incidence of ILD was found to be 1% in a total of 387 patients with psoriatic arthropathy [11].

Methotrexate-induced lung toxicity is well documented [11]. In the present study, out of the 10 patients, only 5 (50%) had a history of immunosuppressant use in the form of methotrexate and cyclosporine. The remaining patients developed ILD without prior exposure to immunosuppressive therapy. This ignites the debate to

explore various immunological pathways and underlying mediators common to both conditions that may lead to lung fibrosis. In the study by Ishikawa G et al., 63.6% of the cases who had both psoriasis and ILD were not exposed to immunosuppressive therapy, either concomitantly or previously [10].

In the present study, PASI scores had an inverse relationship with the time of development of respiratory symptoms, and this correlation was statistically significant. Patients with high PASI scores took less time to develop respiratory symptoms ( $r=-0.906$ ,  $p<0.001$ ). The probable reason may be an overexpression of pro-inflammatory cytokines in patients with high PASI scores, leading to the development of respiratory symptoms and fibrotic lung changes [12,13]. The pathogenesis leading to the development of lung fibrosis in patients with psoriasis may be linked to the upregulation of pro-inflammatory cytokines such as IL-17, Tumour Necrosis Factor  $\alpha$  (TNF- $\alpha$ ), and Transforming Growth Factor  $\beta$  (TGF- $\beta$ ) [14]. This was a unique observation in our cases, and we could not find any literature in Medline showing a correlation between high PASI scores and the development of lung fibrosis. Psoriasis may lead to immune dysregulation, which may further trigger an abnormal immunological cascade in the lung parenchyma, leading to fibrosis and other interstitial changes [14].

Immunological markers for collagen vascular diseases were negative in all patients. The mean FVC% predicted and DLCO% predicted



were 58% and 42%, respectively, at the time of presentation. The mean decline in FVC values was mild (range: 32-85%) compared to DLCO values (23-79%), which showed very severe levels of impairment. This decline in FVC and DLCO was also observed in the study conducted by Ishikawa G et al., [10]. The study established that patients presented with mild impairment in FVC with a median of 69% predicted (range: 38-89%). On the contrary, the DLCO exhibited a more severe reduction, with a median of 47% predicted (range: 17-95%). Remarkably, compared to patients with Idiopathic Pulmonary Fibrosis (IPF), the decline in pulmonary function was relatively mild, as reflected by a subtle annual variation in predicted FVC%, ranging from -5.7% to +18%. We did not perform serial FVC and DLCO to see the performance of pulmonary function, as most of the patients were lost to follow-up. Radiological findings in 7 (70%) cases were consistent with a UIP pattern, NSIP pattern was seen in 2 (20%) cases and 1 (10%) had findings consistent with a CPFE pattern. A high incidence of severe fibrosis in the form of a UIP pattern indicated that the immune dysregulation triggered in psoriasis is severe and is much more than an inflammatory process. All the patients who developed UIP were current (71.42%; n=5) or former smokers (28.57%; n=2).

Although the prevalence of ILD in our study is below one percent, it cannot be ignored, as the plausible association of psoriasis with a life-threatening entity such as lung fibrosis cannot be overlooked. Smoking history and use of agents such as methotrexate were the biggest confounders in the study, as both can independently perpetuate fibrotic changes in lung parenchyma. Methotrexate appears to be less likely the cause of lung fibrosis in our study, as the duration of methotrexate intake before the development of respiratory symptoms was less than 10 months in all the patients. It is very unlikely for a fibrosis-causing drug to induce fibrotic changes in such a short duration.

### Limitation(s)

(a) Relatively small sample size; (b) Study has been performed in a single centre; (c) Study was not conducted among the general population.

## CONCLUSION(S)

Although the proportion of ILD was less than one percent, a confirmatory association between these two entities cannot be

established and more of prospective studies with a much larger sample size are needed to establish a direct association between these two entities. The prevalence of ILD in general population needs to be compared to that of the psoriasis cohort to set out the association between these two entities.

## REFERENCES

- [1] Boehncke WH, Schon MP. "Psoriasis". The Lancet. 2015;386(9997):983-94.
- [2] Dogra S, Yadav S. Psoriasis in India: Prevalence and pattern. Indian J Dermatol Venerol Leprol. 2010;76(6):595-601.
- [3] Armstrong AW, Harskamp CT, Armstrong EJ. The association between psoriasis and hypertension: A systematic review and meta-analysis of observational studies. J Hypertens. 2013;31(3):433-43.
- [4] Armstrong AW, Harskamp CT, Armstrong EJ. The association between psoriasis and obesity: A systematic review and meta-analysis of observational studies. Nutr & Diabetes. 2012;2(12):e54.
- [5] Phang KF, Teng GG, Teo LLS, Seet JE, Teoh CM, Teo FSW. A 67-year-old man with psoriatic arthritis and new onset dyspnea. Chest. 2018;154(5):e127-e134.
- [6] Molet S, Hamid Q, Davoine F, Nutku E, Taha R, Pagé N, et al. IL-17 is increased in asthmatic airways and induces human bronchial fibroblasts to produce cytokines. J Allergy Clin Immunol. 2001;108(3):430-38.
- [7] Kawamoto H, Hara H, Minagawa S, Numata T, Araya J, Kaneko Y, et al. Interstitial pneumonia in psoriasis. Mayo Clin Proc Innov Qual Outcomes. 2018;2(4):370-77. Doi: 10.1016/j.mayocpiqo.2018.07.006. PMID: 30560239; PMCID: PMC6260486.
- [8] Sorger C, Simon JC, Treudler R. Drug induced interstitial lung disease and autoimmune thyroiditis associated with ustekinumab. Acta Derm Venerol. 2020;99(3):331-32.
- [9] Manchanda Y, De A, Das S, Chakraborty D. Disease assessment in psoriasis. Indian J Dermatol. 2023;68(3):278-81. Doi: 10.4103/ijd.ijd\_420\_23. PMID: 37529444; PMCID: PMC10389140.
- [10] Ishikawa G, Dua S, Mathur A, Acquah SO, Salvatore M, Beasley MB, et al. Concomitant interstitial lung disease with psoriasis. Can Respir J. 2019;2019:5919304. Doi: 10.1155/2019/5919304. PMID: 31534591; PMCID: PMC6732645.
- [11] Peluso R, Iervolino S, Vitiello M, Bruner V, Lupoli G, Di Minno MN. Extra-articular manifestations in psoriatic arthritis patients. Clin Rheumatol. 2015;34(4):745-53. Doi: 10.1007/s10067-014-2652-9. Epub 2014 May 8. PMID: 24803233.
- [12] Rondon F, Mendez O, Spinel N, Ochoa C, Saavedra C, Penaranda E, et al. Methotrexate-induced pulmonary toxicity in psoriatic arthritis (PsA): Case presentation and literature review. Clin Rheumatol. 2011;30:1379-84.
- [13] Matsumoto Y, Abe N, Tobita R, Kawakami H, Nakayama H, Setoguchi Y, Tsuboi R, Okubo Y. The risk of interstitial lung disease during biological treatment in Japanese patients with psoriasis. Clin Exp Dermatol. 2020 Oct;45(7):853-858. doi: 10.1111/ced.14259. Epub 2020 Jun 29. PMID: 32356612.
- [14] Singh TP, Schön MP, Wallbrecht K, Gruber Wackernagel A, Wang XJ, Wolf P. Involvement of IL-9 in Th-17 associated inflammation and angiogenesis of psoriasis. PLoS One. 2013;8(1):e51752.

### PARTICULARS OF CONTRIBUTORS:

1. Associate Professor, Department of Respiratory Medicine, Institute of Respiratory Diseases, Sawai Man Singh Medical College, Jaipur, Rajasthan, India.
2. Junior Resident, Institute of Respiratory Diseases, Sawai Man Singh Medical College, Jaipur, Rajasthan, India.
3. Assistant Professor, Department of Preventive and Social Medicine, Rajasthan University of Health Sciences, Jaipur, Rajasthan, India.
4. Assistant Professor, Department of Respiratory Medicine, Institute of Respiratory Diseases, Sawai Man Singh Medical College, Jaipur, Rajasthan, India.
5. Junior Resident, Department of Respiratory Medicine, Institute of Respiratory Diseases, Sawai Man Singh Medical College, Jaipur, Rajasthan, India.

### NAME, ADDRESS, E-MAIL ID OF THE CORRESPONDING AUTHOR:

Dr. Manoj Meena,  
1/H/383, Sector One, Indira Gandhi Nagar, Jagatpura, Jaipur, Rajasthan, India.  
E-mail: manojchest@gmail.com

### PLAGIARISM CHECKING METHODS: [Jain H et al.]

- Plagiarism X-checker: Jul 27, 2024
- Manual Googling: Dec 19, 2024
- iThenticate Software: Dec 21, 2024 (16%)

### ETYMOLOGY: Author Origin

### EMENDATIONS: 6

### AUTHOR DECLARATION:

- Financial or Other Competing Interests: None
- Was Ethics Committee Approval obtained for this study? Yes
- Was informed consent obtained from the subjects involved in the study? Yes
- For any images presented appropriate consent has been obtained from the subjects. Yes

Date of Submission: **Jul 26, 2024**  
Date of Peer Review: **Nov 04, 2024**  
Date of Acceptance: **Dec 23, 2024**  
Date of Publishing: **Apr 01, 2025**